

EXPORT DATA TOOL

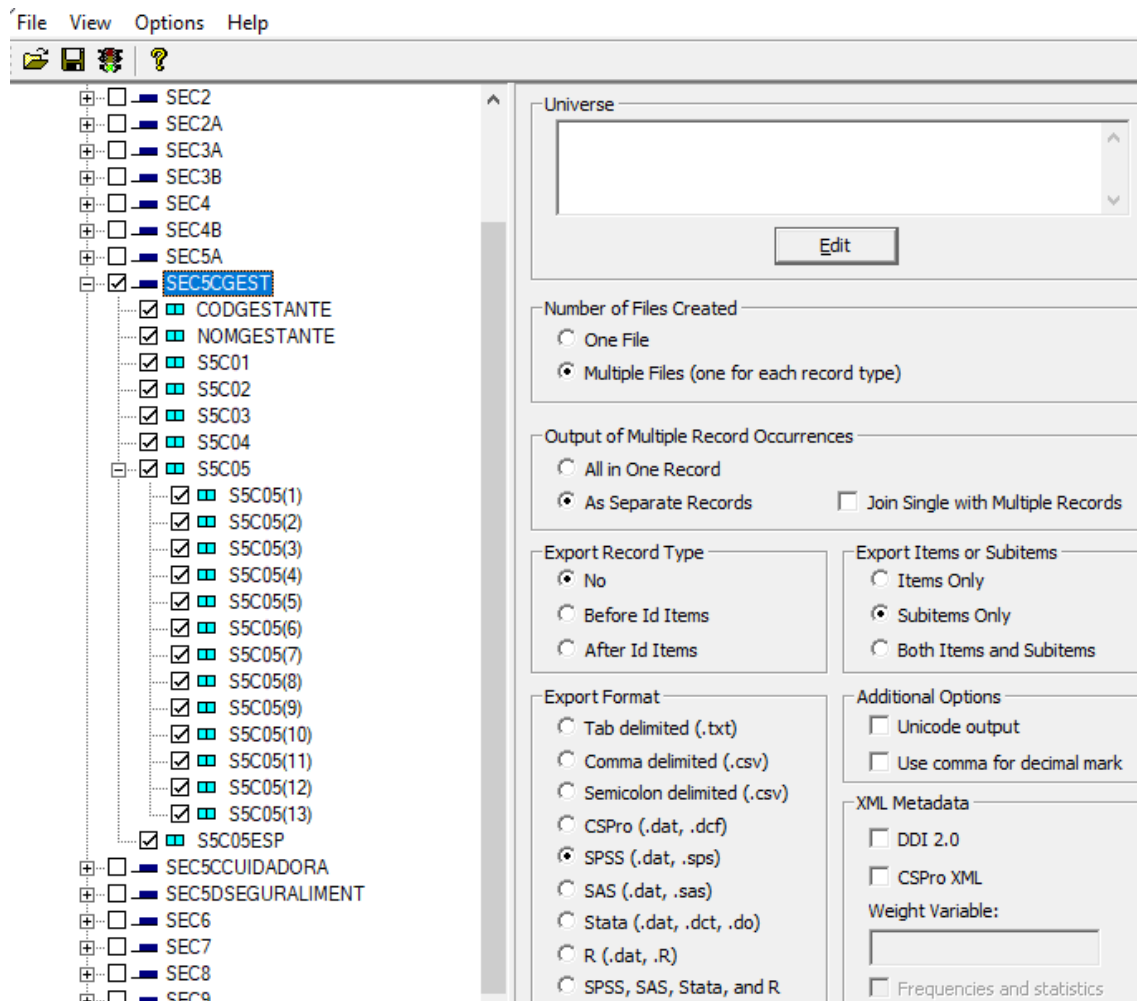
EXPLANATION OF THE CASE

In this example I have the next:

Record: SEC5CGEST is an record with MAX=20.

The S5C05 field, is an multiple occurrece field.

Then when use the Export Data Tool.



This is the original logic.

But the Yellow section really does not exported.

```
PROC DIC_APP_PROSAN_LEVEL
```

```
PreProc
```

```
    set behavior() export (SPSS, SubitemOnly, ANSI);
```

```
    For rec_occ in RECORD SEC5CGEST do
```

```
        EXPORT TO file_SEC5CGEST
```

```

CASE_ID(CODENTREVISTADA, EQUIPOID)
CODGESTANTE, NOMGESTANTE, S5C01, S5C02, S5C03, S5C04, S5C05ESP;
Enddo;

```

```

For rec_occ in RECORD SEC5CGEST do
  For item_occ in ITEM S5C05 do
    If item_occ in 1:13 then
      EXPORT TO file_SEC5CGEST
      CASE_ID(CODENTREVISTADA, EQUIPOID)
      S5C05;
    EndIf;
  Enddo;
Enddo;

```

I changed the logic to that to will export the field.

```
PROC DIC_APP_PROSAN_LEVEL
```

```
PreProc
```

```
set behavior() export (SPSS, SubitemOnly, ANSI);
```

```

For rec_occ in RECORD SEC5CGEST do
  EXPORT TO file_SEC5CGEST
  CASE_ID(CODENTREVISTADA, EQUIPOID)
  CODGESTANTE, NOMGESTANTE, S5C01, S5C02, S5C03, S5C04,
  S5C05(1),S5C05(2),S5C05(3),S5C05(4),S5C05(5),S5C05(6),S5C05(7),S5C05(
8),S5C05(9),S5C05(10),S5C05(11),S5C05(12),S5C05(13),S5C05ESP;
Enddo;

```

And that is the solution.